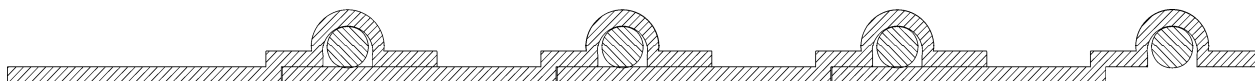




ENGINEERING AND TECHNICAL DATA
Flexadux® TR HT
November 2009

Construction: Heavy weight thermoplastic rubber hose reinforced with a spring steel wire helix



Product Features:

- Suitable for more demanding positive & negative pressure applications
- Designed for applications with wide temperature ranges
- Great moisture & UV resistance
- Excellent chemical resistance
- Smooth interior assures minimal friction loss & efficient air flow
- Wall Thickness = .035" (1 1/2" to 3.5"), .045" (4" to 7 1/2"), .054" (8" & above)
- Available with factory-installed 2" soft cuffs

Applications: Recommended for light bulk material handling applications.

Temperature Range: -60°F to 275°F

Diameter Range (Inches I.D.): 1.50-16.00 Inch I.D.

Standard Length: 25 & 50 Feet

I.D. Tolerances (Inches): To 8 Inch: -0.00 to +0.125 Inch
8 Inch and over: -0.00 to +0.250 Inch

Standard Color: Black

End Finish: Plain Cut

Markets: •Abrasion Resistance •Cotton Pickers •Dust Collection •Fertilizer Broadcasting •Foundry Sand Transfer •Furnace Duct Cleaning •Granule Transport •Hull Sanding Equipment •Lawn & Leaf Collection •Material Handling •Ozone •Peat Moss Vacuum •Plastic Bag Machines •Powder & Bulk •Sand Blasting •Sand & Gravel Suction •Shredders •Street & Parking Lot Sweepers •Suction Hose •Textile Mills •Wave Pool Blowers •Woodworking/Furniture Industries



A **SCHAUENBURG** HOSE TECHNOLOGY COMPANY

1510 Armstrong Road, P.O. Box 4275
Warsaw, IN 46581-4275

Telephone 574-267-7909 • Toll Free 800-343-0428 • Fax 574-269-7491 • Toll Free Fax 800-382-8464
sales@flexaust.com • www.flexaust.com



ENGINEERING AND TECHNICAL DATA
Flexadux® TR HT
(Page 2)
November 2009

SIZE INSIDE DIMENSION (INCHES)	APPROXIMATE WEIGHT (LBS./FT.)	MINIMUM CENTERLINE BEND RADIUS (INCHES)	COMPRESSION RATIO	MAXIMUM RECOMMENDED NEGATIVE PRESSURE (IN./HG.)	MAXIMUM RECOMMENDED POSITIVE PRESSURE (PSI)
1.5	.27	2	2:1	29	30
2	.34	3.29	2:1	29	24
2.5	.36	3.77	2:1	29	19
3	.5	4.25	2:1	29	16
4	.72	4.75	2:1	29	12
5	.89	5	2:1	16	10
6	1.05	5.25	3:1	8.3	9
7	1.23	6	3:1	5.2	8
8	1.4	6.9	3:1	3.4	7
10	2.12	8	3:1	3.4	6
12	2.5	10	3:1	2	5.5
14	2.7	12	3:1	.72	5.2
16	3	14	3:1	.5	4.6

Note: Technical data based on 2 ft. straight lengths of hose @ 72° F.

Disclaimer: The proper use and maintenance of hose and/or duct manufactured by Flexaust is the sole responsibility of the purchaser and ultimate user of the product. This information is presented as a general guide only. The number of variables which can be present in any application make firm recommendations impossible. Adequate testing under actual service conditions is necessary to properly establish suitability. We take pride in the quality of all Flexaust products and we welcome comments and suggestions from our customers.



A SCHAUBURG HOSE TECHNOLOGY COMPANY

1510 Armstrong Road, P.O. Box 4275
Warsaw, IN 46581-4275

Telephone 574-267-7909 • Toll Free 800-343-0428 • Fax 574-269-7491 • Toll Free Fax 800-382-8464
sales@flexaust.com • www.flexaust.com