



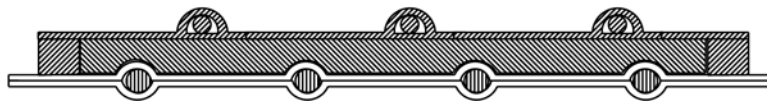
ENGINEERING AND TECHNICAL DATA

Heat-Flex® Flex-Vest®

October 2007

Construction:

Inner Layer; Double-ply silicone coated fiberglass fabric hose reinforced with a spring steel wire helix
Outer layer; Single-ply neoprene coated polyester fabric hose reinforced with a spring steel wire helix
Insulation; 1-inch fiberglass insulation (R-Value=4)



Product Features:

- Insulated dryer hose
- Combines flexibility with minimal heat loss
- Suited for air handling applications at low positive & low negative pressures
- Good flexibility
- Excellent external abrasion & chemical resistance

Applications: Recommended for industrial air movement and fume control applications.

Temperature Range: Inner Layer; -65°F to 550°F, Intermittent to 600°F
Outer Layer; -40°F to 250°F

Diameter Range (Inches I.D.): 1.00-6.00 Inch I.D., Custom to 8.00 Inch I.D.

Standard Length: 12 Feet, Custom to 25 Feet

I.D. Tolerances (Inches): -0.00 to +0.125 Inch

Standard Color: Inner Layer; Iron Oxide Red
Outer Layer; Black

End Finish: Plain Cut

Markets: •Aerospace •Aluminum Refractory •Brick Kilns •Chemical Plants •Cold Air Supply
•Diesel/Engine Exhaust •Dryer Hose •Exhaust Systems •Foundries •Fume Exhaust •Garage Exhaust
•Glass Drying •Heater •High Temperature Applications •Plastic Bag Machines •Plastics Industry
•Safety Equipment •Ventilation



A **SCHAUENBURG** HOSE TECHNOLOGY COMPANY

1510 Armstrong Road, P.O. Box 4275

Warsaw, IN 46581-4275

Telephone 574-267-7909 • Toll Free 800-343-0428 • Fax 574-269-7491 • Toll Free Fax 800-382-8464

sales@flexaust.com • www.flexaust.com



ENGINEERING AND TECHNICAL DATA

Heat-Flex® Flex-Vest®

(Page 2)

October 2007

SIZE INSIDE DIMENSION (INCHES)	APPROXIMATE WEIGHT (LBS./FT.)	MINIMUM CENTERLINE BEND RADIUS (INCHES)	COMPRESSION RATIO	MAXIMUM RECOMMENDED NEGATIVE PRESSURE (IN./HG.)	MAXIMUM RECOMMENDED POSITIVE PRESSURE (PSI)
1	.5	2	2.5:1	29	30
1.5	.6	2.5	2.5:1	29	30
2	.8	3	2.5:1	29	30
2.5	.9	3.5	2.5:1	29	30
3	1	4	2.5:1	29	30
3.5	1.1	4.25	2.5:1	29	30
4	1.2	4.5	2:1	27	30
4.5	1.4	5	2:1	20	30
6	1.6	5.5	2:1	9	19
8	2	6.5	2:1	9	14

Note: Technical data based on 2 ft. straight lengths of hose @ 72° F.

Disclaimer: The proper use and maintenance of hose and/or duct manufactured by Flexaust is the sole responsibility of the purchaser and ultimate user of the product. This information is presented as a general guide only. The number of variables which can be present in any application make firm recommendations impossible. Adequate testing under actual service conditions is necessary to properly establish suitability. We take pride in the quality of all Flexaust products and we welcome comments and suggestions from our customers.



A **SCHAUENBURG** HOSE TECHNOLOGY COMPANY

1510 Armstrong Road, P.O. Box 4275

Warsaw, IN 46581-4275

Telephone 574-267-7909 • Toll Free 800-343-0428 • Fax 574-269-7491 • Toll Free Fax 800-382-8464

sales@flexaust.com • www.flexaust.com